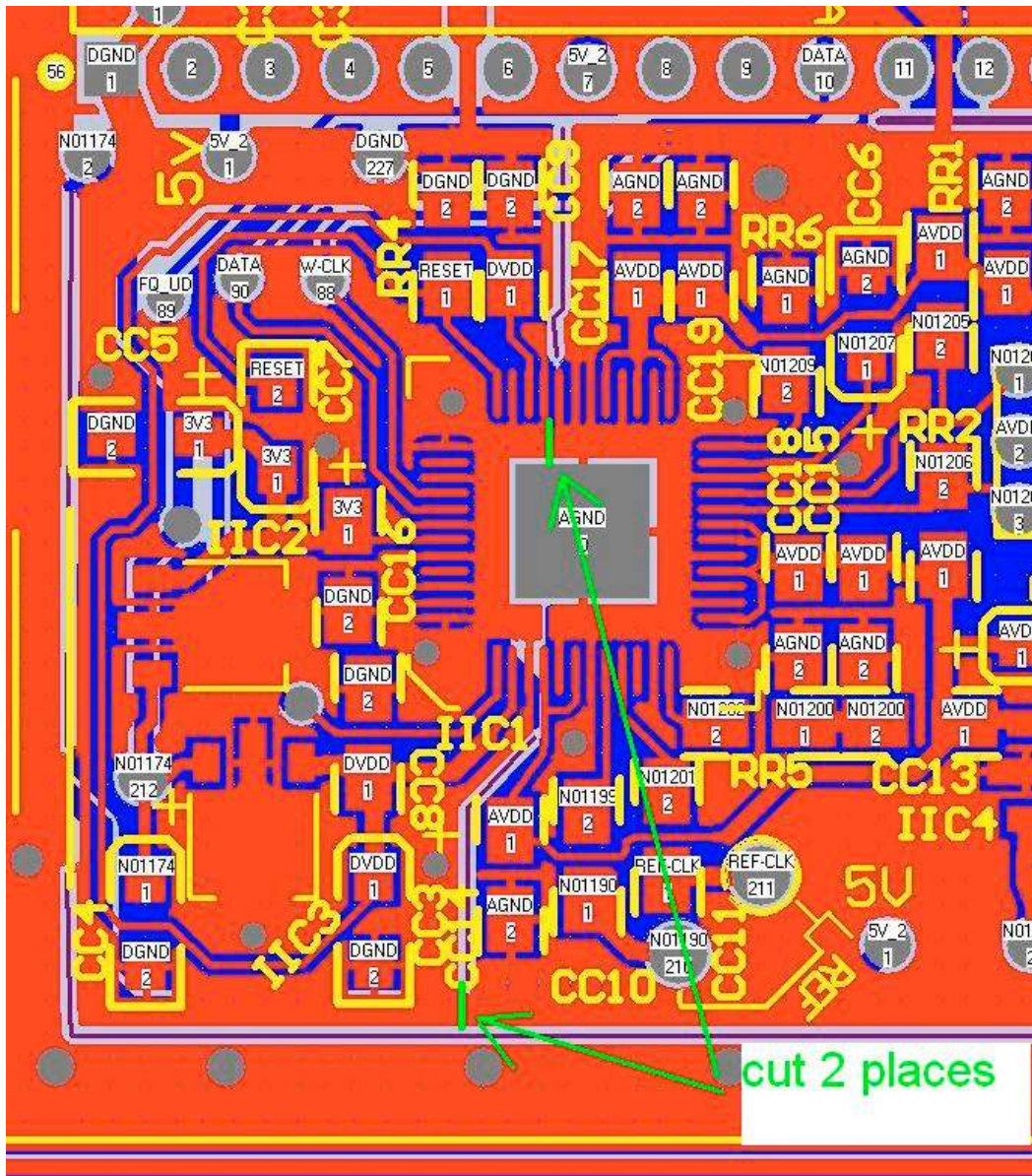


PROBLEMS WITH THE COMBO C2 VERSION PCB'S

No matter how hard one tries, there always seems to be a little 'bug' in the PCB.

While this actually is unlikely to cause any real problem, without any measurements being taken of the DDS output, the grounds on the DDS area have been accidentally joined when the ground areas were poured. The PCB package shows no errors but they are joined! The bottom is OK.

Use a sharp knife to carefully cut the two sections of track shown below on the TOP of the PCB only, in the DDS area. Ensure the area under the DDS chip is smooth after cutting.



Thanks to Roger for spotting this mistake.

Glenn
Vk3pe