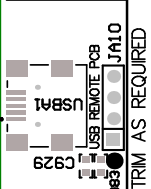


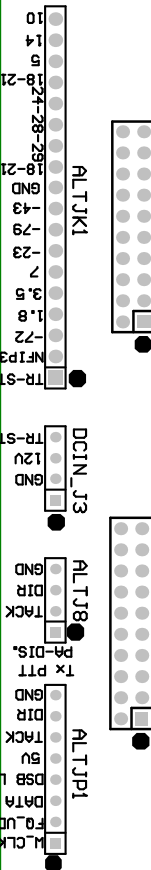
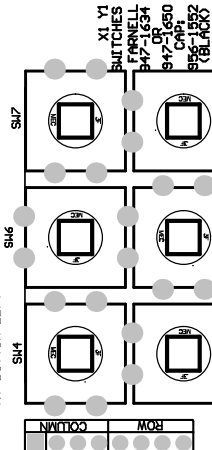
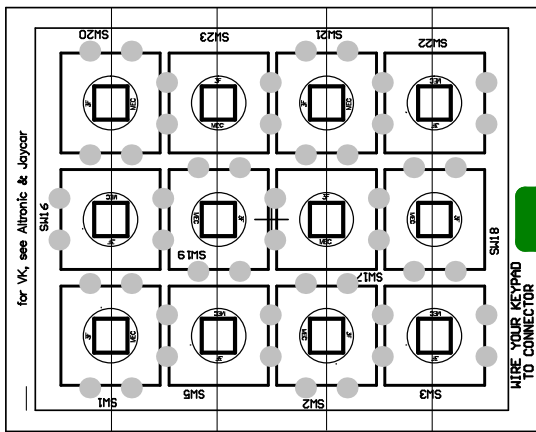
LAYERS ORDER:
TOP OVERLAY



TRIM AS REQUIRED

MAPLIN KEYPAD IS 'JMOSEK'
Futur1ec 'KEYPADS' (BLACK)

for VK, see Alltronic & Joycar

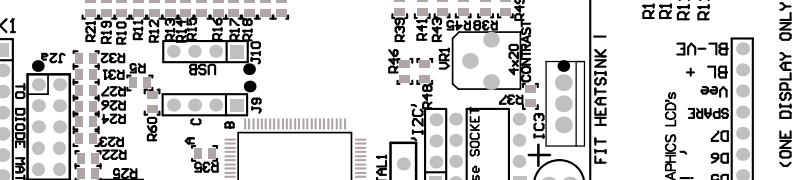
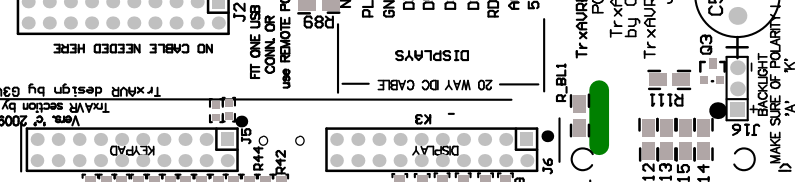
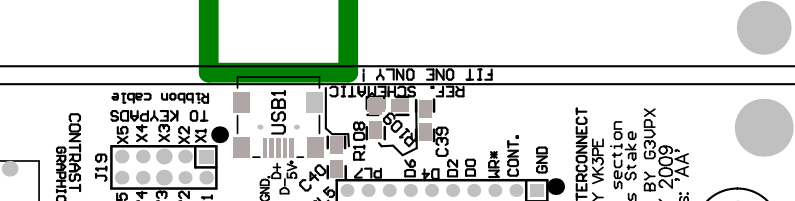
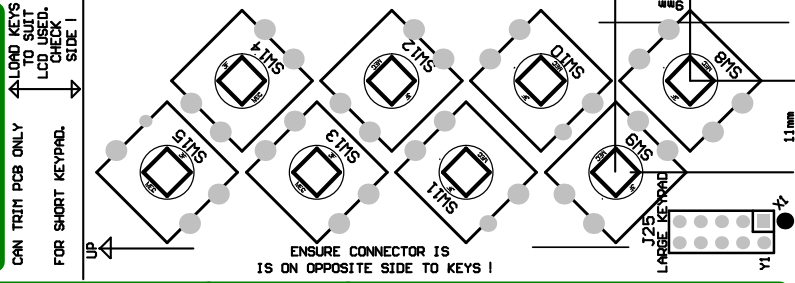
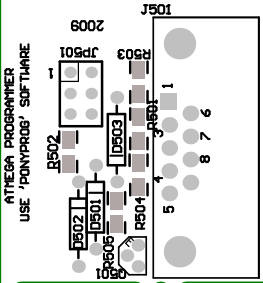


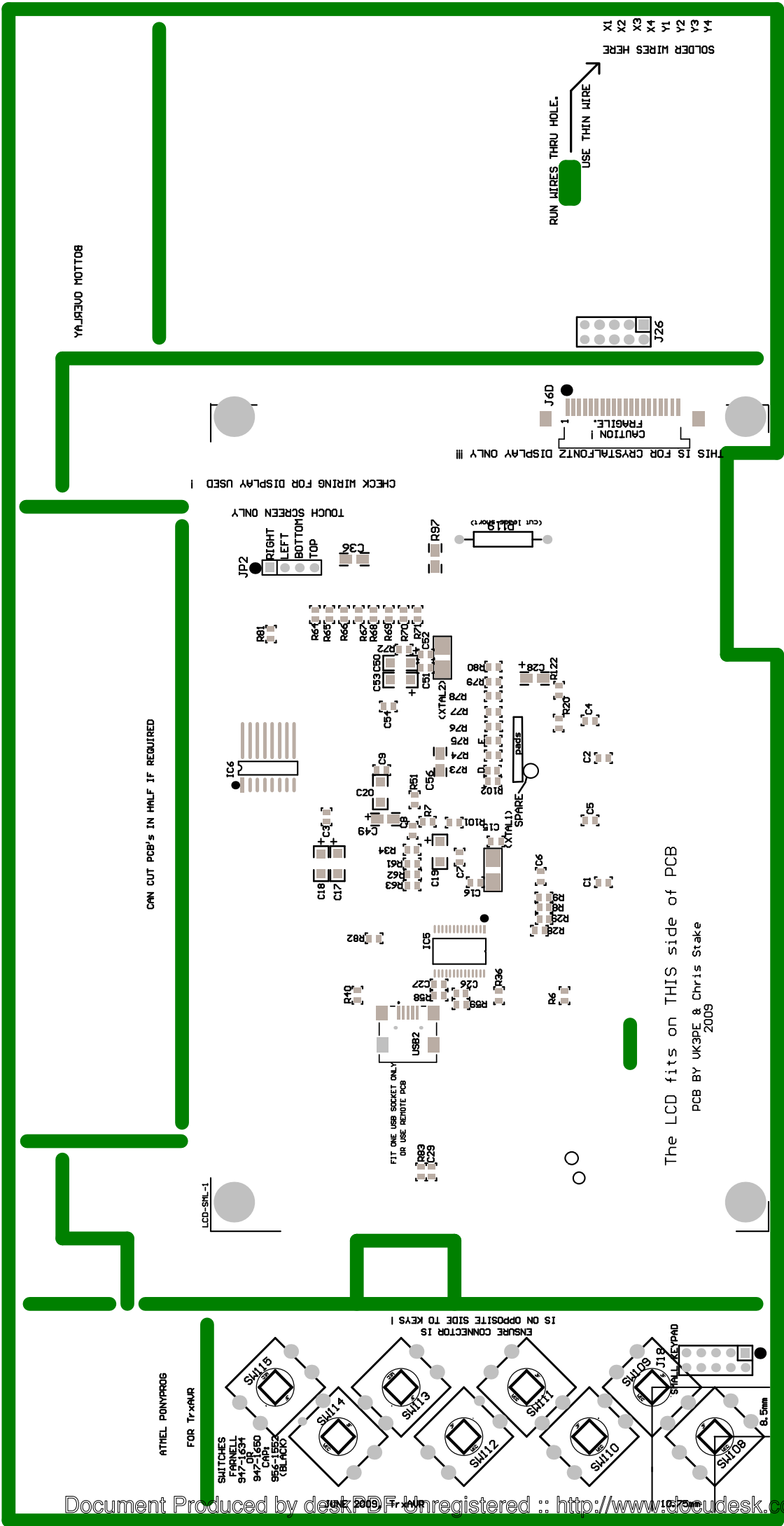
'CAUTION' ENSURE CABLES ARE PLUGGED IN CORRECTLY! PIN 1 TO PIN 1

LCD FITS ON OTHER SIDE

TRIM

CUT PCB FOR DISPLAY USED.





YAJEJVO MOTTDB8

RUN WIRES THRU HOLE.
 USE THIN WIRE.
 SOLDER WIRES HERE
 X1
 X2
 X3
 X4
 Y1
 Y2
 Y3
 Y4

THIS IS FOR CRYSTALFONTZ DISPLAY ONLY !!!
 CAUTION
 FRAGILE.
 J6D

TOUCH SCREEN ONLY
 CHECK WIRING FOR DISPLAY USED !
 JP2
 TOP
 BOTTOM
 LEFT
 RIGHT
 C36

CAN CUT PCB'S IN HALF IF REQUIRED

The LCD fits on THIS side of PCB
 PCB BY UK3PE & Chris Stake
 2009

LCD-SHL-1

FIT ONE USB SOCKET ONLY
 OR USE REMOTE PCB
 C29
 R89

ATMEL PONYPROG
 FOR TrxAVR

