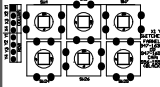
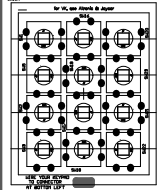


**LAYERS ORDER:-**  
TOP OVERLAY



TRM IS KEYPAD IS 'TRM'  
Function: 'KEYPAD' (BLVD)

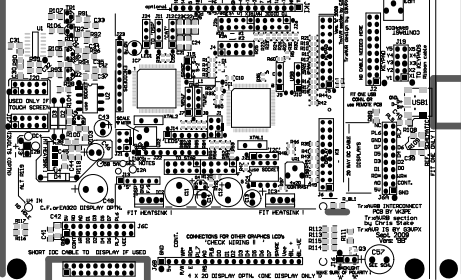
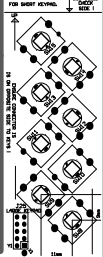


\*CAUTION: ENABLE CHANNELS PLUGGED IN CORRECTLY FROM 1 TO 16

CUT FOR PDB DISPLAY USED.



CUT FOR PDB ONLY FOR NIGHT KEYPAD



ALIGNED TO BOARD

USED ONLY FOR TOUCH SCREENS

IN C.F. or X20 DISPLAY OPTN.

SHORT IDC CABLE TO DISPLAY IF USED

1 FT HEATSHIELD

1 FT HEATSHIELD

CONNECTIONS FOR OTHER CHANNELS "CHECK WIRING"

1 X 20 DISPLAY OPTN. (ONE DISPLAY ONLY)

TRM IS KEYPAD IS 'TRM'

FUNCTION: 'KEYPAD' (BLVD)

TRM IS KEYPAD IS 'TRM'

FUNCTION: 'KEYPAD' (BLVD)

TRM IS KEYPAD IS 'TRM'

FUNCTION: 'KEYPAD' (BLVD)

TRM IS KEYPAD IS 'TRM'

FUNCTION: 'KEYPAD' (BLVD)

TRM IS KEYPAD IS 'TRM'

FUNCTION: 'KEYPAD' (BLVD)

TRM IS KEYPAD IS 'TRM'

FUNCTION: 'KEYPAD' (BLVD)

TRM IS KEYPAD IS 'TRM'

FUNCTION: 'KEYPAD' (BLVD)

TRM IS KEYPAD IS 'TRM'

FUNCTION: 'KEYPAD' (BLVD)

TRM IS KEYPAD IS 'TRM'

FUNCTION: 'KEYPAD' (BLVD)

TRM IS KEYPAD IS 'TRM'

FUNCTION: 'KEYPAD' (BLVD)

TRM IS KEYPAD IS 'TRM'

FUNCTION: 'KEYPAD' (BLVD)

TRM IS KEYPAD IS 'TRM'

FUNCTION: 'KEYPAD' (BLVD)

