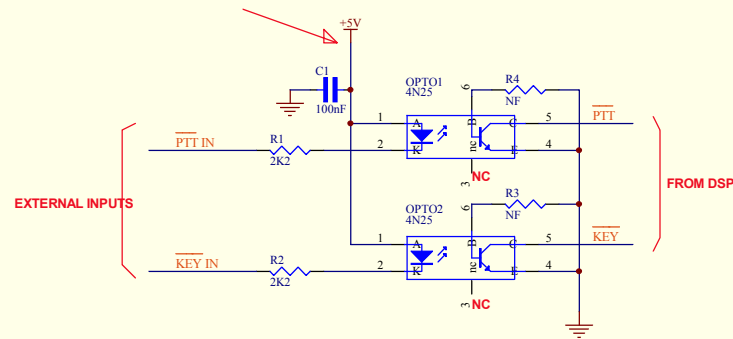


DSP OPTO ISOLATOR FOR PTT & KEY TO DSP

D1 & D2 REMOVED FROM DSP MOTHER BOARD
THIS PCB ADDED TO "REPLACE" D1 & D2
ie. this PCB sits over where D1 & D2 were removed.
Wire links are then fitted thru the PCB into the DSP M'bd.

WIRE LEAD TO 5V ON DSP M'BD.



Sheet:	PICaSTAR SCHEMATICS BY VK3PE & C.S. —BASED ON ORIGINALS (C) BY G3XJP	
0 of 0	TITLE:- F:\Pnl-2208\OPTO ISOLATOR\OPTO-ISOLATE_050208_A.Sch	
	For Oct 2007 "VK3PE PCBs"	Vers